



**SAVE THE DATE**  
7th-9th, February 2018  
SUVA, FIJI


Logo of the Pacific Islands Development Forum (PIDF) and the Pacific Islands Maritime Forum (PIMF).

**IMO Shipping Emissions Roadmap**  
PACIFIC MARITIME TECHNICAL OFFICERS WORKSHOP

## What's up for debate in 2018

Initial Strategy – key issues & implications for  
Pacific & Shipping High Ambition  
Coalition (SHAC)

**MICRONESIAN CENTER  
FOR SUSTAINABLE  
TRANSPORTATION**

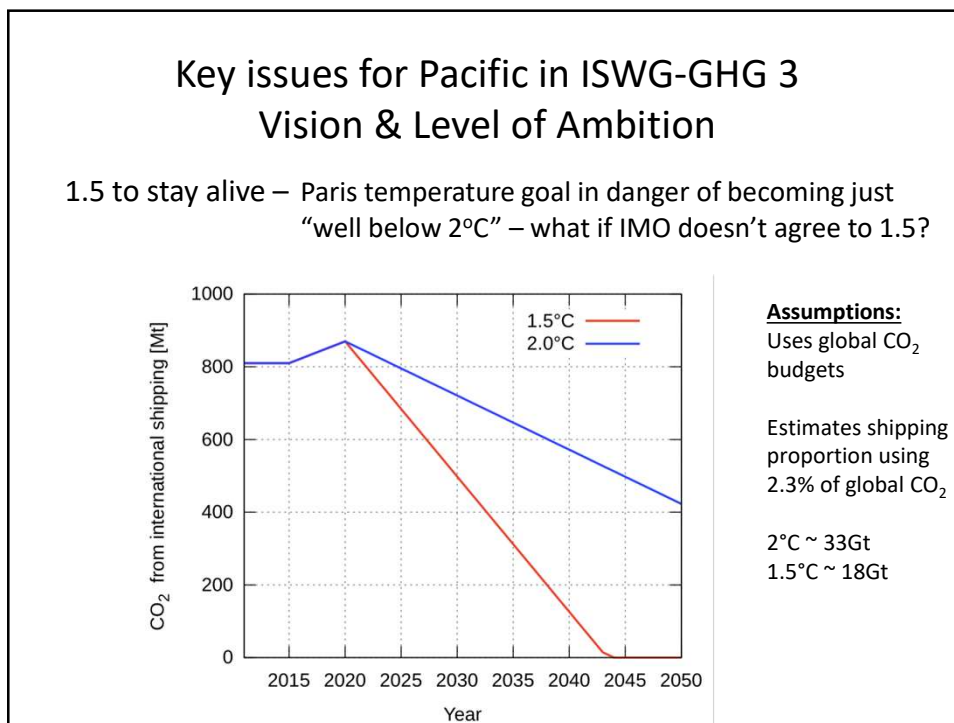
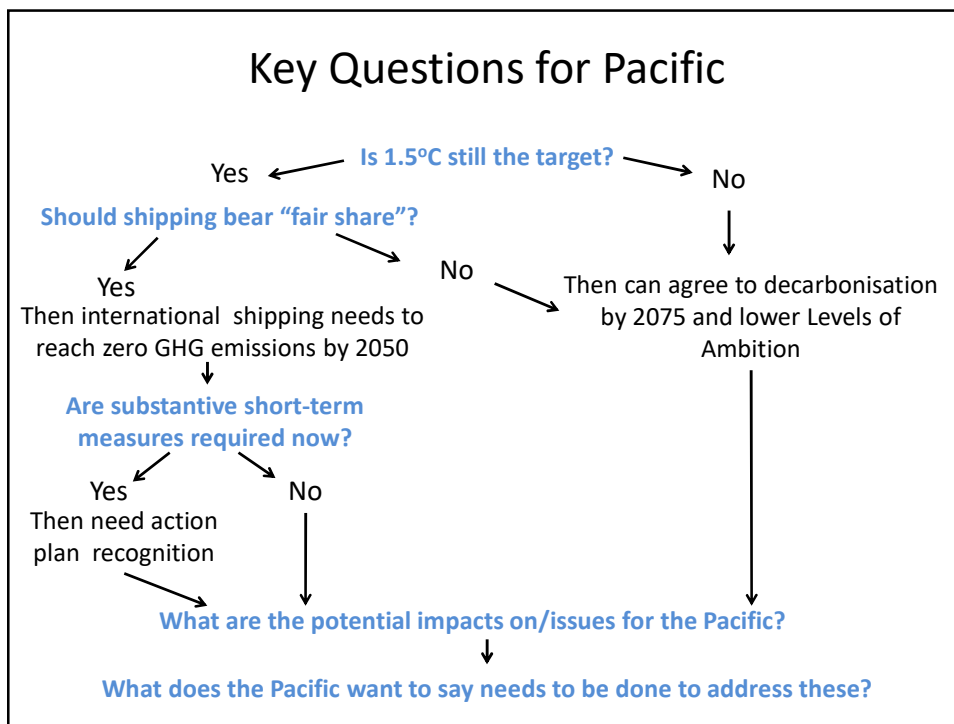
 **USP**  
THE UNIVERSITY OF THE  
SOUTH PACIFIC

A joint collaboration  
between RMI Government  
and USP



### 3<sup>rd</sup> ISWG GHG

- Last opportunity to debate text for Initial Strategy (assuming is adopted at MEPC 72)
- Chair has proposed revised text as basis for discussion
- All previous submissions are still “on the table” – but not really
- Pressure to compromise to reach consensus
- Industry wants certainty, clarity and regulation to create level playing field



### Key immediate actions identified in Draft Pacific Position Paper

- Early and full identification of potential impacts for SIDS and LDCs including: transport cost, transport security and dependency, disaster preparedness and response, ability to exercise flag and port state responsibilities, etc.
- Data collection and analysis to enable full assessment of potential impacts (both negative and positive) on States, particularly SIDS and LDCs
- Full identification and assessment of regulatory and voluntary short-term measures
- Early identification, assessment and development of measures to address/redress disproportionate impacts (including MBMs and MBIs, increased institutional strengthening, commitment to prioritising R&D for smaller ships as well as large ships)

Pacific States that have ratified MARPOL Annex VI:

Cook Islands  
Kiribati  
Marshall Islands  
Niue  
Palau  
Samoa  
Tonga  
Tuvalu  
Vanuatu

### Key issues for Pacific in ISWG-GHG 3 Pacific Specific\* Issues

- Need full assessment of potential impacts on SIDS – not just transport costs
- Want early ID and development of appropriate compensatory/redress measures –
- Both require data collection and analysis for SIDS related issues as priority

\* probably same or similar for other SIDS and LDCs

## Key issues for ISWG-GHG 3

Other matters to be aware of:

- CBDR/RC v NMFT
- Impacts on States – what about developing countries that are big emitters?
- MBMs & MBIs – past IMO debate
- Interface between IMO/UNFCCC

What happens after April?

- Assuming the Initial Strategy is agreed then work moves to Measures and Action Plans